



VALIANT

Leisure Rigid Inflatable Boats





VALIANT

Whether your favourite boating activity is relaxing or invigorating, Valiant has created a wide range of well designed and safe Rigid Inflatable Boats (RIB).

Valiant offers the most comprehensive line of Rigid Inflatable Boats in the leisure market and is proud to be referred as the «SUV of the SEA».

- The **COMFORT** series offers four models ranging from 5m to 6.30m. The tubes are made with the strongest Haku PVC in a grey with clear upholstery and blue accents that reinforce the dynamic character of this line.
- The **CLASSIC** offers five models ranging from 5m to 6.85m. This new series is made with the highest quality and market-leading material in the industry, Hypalon ORCA. The tubes are in a white cream colour, which elegantly matches the neutral tones of its upholstery.

Both new Comfort and Classic ranges have been designed in finite details taking all the traditional values of a RIB into consideration: performance, stability, security, storage capacity, ease of transport and use. They offer the most complete and competitive package.

Valiant is the perfect family boat for any occasion: ideal for beach hopping, water skiing, exploring, and swimming or just sun bathing!



*Whatever your passion is,
live it safely!*

CLASSIC

685 4|5

630 580 6|7

550 500 8|9

COMFORT

630 580 10|11

550 500 12|13

Optional accessories 14|15

Engine details 16|17

Technical data 18

Equipments and accessories 18|19

685 CLASSIC

CRUISE IN STYLE

Looking for the right craft to share new emotions and adventures with your friends and family? Our newest 685 is the perfect choice! It is powerful, well balanced, safe, easy to use and extremely comfortable.

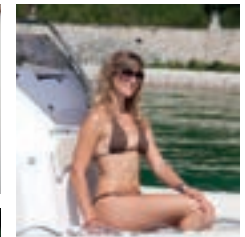
The stern lounge is very spacious and multi functional: comfortably seating three people, just fold the backrest and use the fibreglass table kit with support and cushions to convert it into a very spacious sundeck area or a dining area to share an aperitif or a snack; all well protected when driving with the back rest and optional fixed right side backrest.

The new central console is perfectly ergonomic and fully equipped; driving could not be more enjoyable using the adjustable leaning post.

The bow sundeck extends down the sides and is extremely comfortable. Use the wide deep storage of the side benches to store all the large items such as cushions sets, ski mast or wakeboard and any of the many stern lockers for all other belongings. With the incredible amount of interior space and secured storage, this boat has a place for everything and everyone.

Many other features are available to enhance your comfort: roll bar, bimini, fridge, console front seat, real teak, and fibreglass platform on tubes...

Live your passion to the full!



MAIN CHARACTERISTICS

685

CE Category	B
Length overall (m)	6.75
Beam overall (m)	2.71
Max. capacity persons	14
Max. power recommended (hp)	200
Total boat weight (excl engines) (kg)	990
Fuel tank (L)	200
Material Finish: HYPALON Orca	1670 Dtex

685 CLASSIC



630-580 CLASSIC

MAXIMUM DELIGHT

These versatile day cruising Ribs have been designed with the whole family in mind; they are the ideal boats for a weekend touring inland waters, ocean coast navigation, sunbathing and swimming.

The 580 and 630 Classic will impress you with their overall performance on the water; these models appeal to people looking for a stable, quick planning and fast Rib boat.

You will also enjoy the great comfort offering: spacious bow sundeck with cushions, comfortable bench locker with backrest convertible into a sundeck, stainless steel leaning post (on 630 model), plenty of storage space in the numerous lockers, a new console perfectly ergonomic with front seating, full instrumentation and hydraulic steering system.

Maximize your comfort level with the extensive list of options: bow sundeck extension, bow table kit, roll bar, bimini, and ski mast, to name just a few.



580 Classic



MAIN CHARACTERISTICS	630	580
CE Category	C	C
Length overall (m)	6.3	5.84
Beam overall (m)	2.5	2.5
Max. capacity persons	13	9
Max. power recommended (hp)	150	115
Total boat weight (excl engines) (kg)	740	620
Fuel tank (L)	140	115
Material Finish: HYPALON Orca	1670 Dtex	1100 Dtex

G30 CLASSIC



550-500 CLASSIC

PERFECT BOAT FOR RECREATIONAL ACTIVITIES

The 500 and 550 classic have been specifically designed to retain the traditional values of the Ribs: ease of transport/storage with excellent performance, seaworthiness and high level of comfort.

The decks have been optimized to ensure easy on board movement; the new console with sleek design is well equipped with complete instrumentation, stainless steel handrail, windscreen, front seat....

Relaxing and sunbathing have never been easier on this size of boat; the bow sundeck furnished with cushions can be completed with the bow extension and the bench locker with backrest is convertible into a comfortable sundeck (on 550 model). There is plenty of room to store your bags and gears in the large bow and stern lockers.

Complete or adapt your program with the list of options available: bimini, ski mast and hydraulic steering system (on 550 model)... This very attractive series is the perfect choice for any recreational activities.



550 Classic



MAIN CHARACTERISTICS	550	500
CE Category	C	C
Length overall (m)	5.33	5.01
Beam overall (m)	2.34	2.32
Max. capacity persons	9	8
Max. power recommended (hp)	80	60
Total boat weight (excl engines) (kg)	485	390
Fuel tank (L)	70	38
Material Finish: HYPALON Orca	1100 Dtex	1100 Dtex

550 CLASSIC



630-580 COMFORT

ENJOY BOATING WITH FAMILY AND FRIENDS

These versatile day cruising Ribs have been designed with the whole family in mind; they are the ideal boats for a weekend touring inland waters, ocean coast navigation, sunbathing and swimming.

The 580 and 630 Comfort will impress you with their overall performance on the water; these models appeal to people looking for a stable, quick planning and fast Rib boat.

You will also enjoy the great comfort offering: spacious bow sundeck, comfortable bench locker with backrest convertible into sundeck, stainless steel leaning post (on 630 model), plenty of storage space in the numerous lockers, a new perfectly ergonomic console with front seating, full instrumentation and hydraulic steering system.

Maximize your comfort level with the extensive list of options: bow sundeck cushions and extension, bow table kit, roll bar, bimini, ski mast, to name just a few.



630 Comfort



630 Comfort



580 Comfort



MAIN CHARACTERISTICS

	630	580
CE Category	C	C
Length overall (m)	6.3	5.84
Beam overall (m)	2.5	2.5
Max. capacity persons	13	9
Max. power recommended (hp)	150	115
Total boat weight (excl engines) (kg)	740	620
Fuel tank (L)	140	115
Material Finish: Haku PVC	1100 Dtex	1100 Dtex

S80 COMFORT



550-500 COMFORT

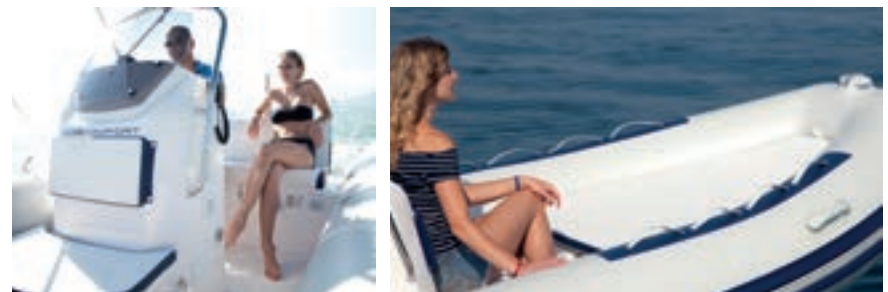
PERFECT FOR EXPLORATION

This very attractive series is the perfect choice for any recreational activities. The 500 and 550 Comfort not only retain the traditional values of a RIB such as ease of transport with excellent performance and seaworthiness, but they also offer a high level of comfort and storage for their size.

The decks have been optimized to ensure easy on board movement; the new console with sleek design is well equipped with full instrumentation, stainless steel handrail, windscreen, front seat....

These ribs are polyvalent; the bow sundeck is spacious and easy to set up; the bench locker is comfortable and convertible in a sundeck (550 model). There is plenty of room to store your bags and gears in the five lockers available.

Complete or adapt your program with the list of options available such as the ski mast of 550 Comfort, hydraulic steering system on the 550, bimini....



MAIN CHARACTERISTICS	550	500
CE Category	C	C
Length overall (m)	5.33	5.01
Beam overall (m)	2.34	2.32
Max. capacity persons	9	8
Max. power recommended (hp)	80	60
Total boat weight (excl engines) (kg)	485	390
Fuel tank (L)	70	38
Material Finish: Haku PVC	1100 Dtex	1100 Dtex

500 COMFORT



OPTIONAL ACCESSORIES

This is a non exhaustive list of the optional accessories available for your Classic and Comfort RIBS.
Consult your agent to ensure that these accessories are compatible with your boat.

Fibreglass bow roller



Bimini in painted aluminium - blue or beige



Bimini for Roll Bar - blue or beige



Bimini for roll Bar - beige (685 model)



Stainless steel roll bar with navigation lights (685 model)



Stainless steel roll bar with navigation lights (except 685 models)



Console front seat



Deck shower with water tank:
39 liter (500/500) or
45 liter (580/630/685)



Fixed right side backrest with cushions



Bow sundeck cushion
(Comfort models)



Rear fibreglass table kit with support and sundeck cushion (685 model)



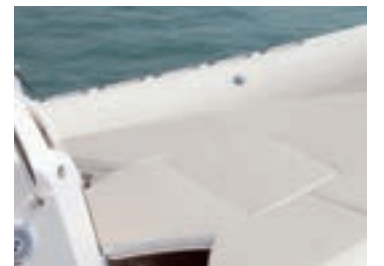
Bow extension sundeck with beige or white cushions (580/630 models)



Bow extension sundeck with beige or white cushions (550/500 models)



Bow extension sundeck (685 model)



OPTIONAL ACCESSORIES

This is a non exhaustive list of the optional accessories available for your Classic and Comfort RIBS.
Consult your agent to ensure that these accessories are compatible with your boat.

Real teak



Stainless steel ski mast



Fibreglass platform on tube



Fridge



Bow kit table with support



Black Compass F-50



Black Compass F-83



VHF model Standard Horizon GX 1100
+ Antenna Banten Fastif + bracket



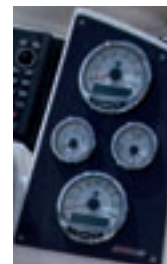
Radio model FUSION MS RA200 + Dock iPod RA 200 + Speaker 4" + Antenna am-fm



SmartCraft for 630 models



SmartCraft for 685 model



ADVANTAGES OF CHOOSING A RIGID INFLATABLE BOAT? WHY THE VALIANT BRAND?

FUNCTIONALITY: The deck plans are optimized to increase internal space and storage capacity; on board movement is very easy. A great advantage of a RIB versus a fibreglass boat of the same dimension is that it can carry a larger number of people. A 5.5m semi-rigid can take 8-9 people compared with only 5 or 6 in a fibreglass boat.

COMFORT: The sundecks are very spacious, easy to set up and feel comfortable and secure. A large variety of standard and optional equipment make the ribs very comfortable: sunbathing, eating, swimming or surfing, it couldn't be easier!

STABILITY: With better hull structural quality and stabilizing inflatable tubes, the Valiant ribs feel very comfortable at sea. When stationary, the semi-rigid craft rolls less and passengers feel safer.

SAFETY: The PVC tube is made out of one external chamber and a series of four individual internal chambers. In the event of a leakage or tear, the tube will retain its form and secure buoyancy. All models above 5m offer self-bailing characteristics.

EASE OF TRANSPORT: The lightweight, new design of the Valiant ribs make them easy to transport and use on land, at anchor and at sea.

PERFORMANCE & ECOLOGY: The dimensions and light weight of each Valiant model have been optimized to give an excellent weight to power ratio. This also means that you can use a less powerful engine than a fibreglass boat for the same performance; they are extremely fuel-efficient, easily maintained and therefore more ecological and economical.

VALIANT TECHNOLOGY AND MATERIALS

Valiant crafts are manufactured with a highly industrialized process guaranteeing greater reliability with a constant and uniform quality.

PVC material: The Haku PVC material used has been specifically developed for Valiant inflatable craft (1100 Decitex fabric) especially by the Mehler Haku group from Germany.

Valiant uses the Thermowelding process which combines fusion with calendaring at high pressure to assemble the different parts of the tubes.

HYPALON material: Valiant decided to complete this offering using Orca Hypalon fabric, the leading material in the industry, to make the tube of its new Classic line. As the only proven and time-tested material, Hypalon has incredible resistance to abrasions, chemicals such as fuel oils; mechanical stresses, UV damage, and extreme temperatures. Furthermore, Hypalon is easily repaired in the rare event of punctures or tears. Using 1100 or 1670 Dtex Hypalon, Valiant tubes are cut to exacting patterns with all seams carefully overlapped and double glued internally and externally.

Thermowelding®



VALIANT WARRANTY

Our mission is to produce high-quality, cost-efficient boats using superior people, quality, materials and state-of-the-art manufacturing equipment and facilities. Valiant craft used solely for recreational purposes are guaranteed for two years from the date of purchase against any defects in fabric or workmanship of the craft or its components and five years against welding failures.

EXPERIENCE THE BEST IN BOATING

When you rig your boat with a Mercury Outboard, you're not just getting the best power available. You're getting an experienced team of boating enthusiasts who are dedicated to taking care of you. No matter how you want to use your boat - fishing, skiing, cruising or just relaxing on a sunny day, everyone at Mercury is here to make sure each minute you spend on the water is unforgettable. For more than 70 years, our dedicated focus on marine power means that nobody has helped more people enjoy boating than Mercury. With a full range of outboard options, you can count on us to deliver the performance you want, the reliability you need and a driving experience that's better than everything else. Whether it's a quiet FourStroke or lightning fast OptiMax, every Mercury gives you unbelievable low-speed control, reliability and fuel efficiency. Mercury outboard are covered by the largest, best-trained dealer network on the planet and the best warranty in the business. We hope you choose Mercury to power your boat. Should that be the case, our promise is simple:

We'll be right there with you every day.

MERCURY MARINE ENGINE TECHNOLOGIES



4 STROKE

Intake, compression, power, exhaust.

These are the stages of the four-cycle combustion process. Because every combustion series consists of four discreet stages, 4 stroke engines are quiet, smooth, fuel efficient and produce low emissions.



VERADO®

Verado®, The revolutionary Verado® 4 stroke is equipped with a supercharger for unmatched acceleration and responsiveness, unbeatable torque, precise control through digital throttle and shift, and standard electro hydraulic steering on select models.



OPTIMAX®

A direct injected engine that combines intake with compression and exhaust with power. Because fuel is injected directly into the cylinder by a unique two-stage digital controlled injection system and the combustion stages are combined in two-cycles, OptiMax engines are responsive, fuel efficient and powerful whilst producing low emissions.



VALIANT COMFORT AND CLASSIC LIST OF STANDARD AND OPTIONAL EQUIPEMENT		COMFORT				CLASSIC				
		500	550	580	630	500	550	580	630	685
TECHNICAL DATAS	CE Category	C	C	C	C	C	C	C	C	B
	Length Overall (m)	5.01	5.33	5.84	6.3	5.01	5.33	5.84	6.3	6.75
	Length Inside (m)	3.8/3.0	4.1/3.0	4.6/4.0	5.1/4.4	3.8/3.0	4.1/3.0	4.6/4.0	5.1/4.4	5.55
	Beam Overall (m)	2.32	2.34	2.5	2.5	2.32	2.34	2.5	2.5	2.71
	Beam Inside (m)	1.2	1.2	1.3	1.3	1.2	1.2	1.3	1.3	1.48
	Tube Diameter (cm)	40-55	40-60	43-61	43-61	40-55	40-60	43-61	43-61	50-61
	Number of air chambers	5	5	5	5	5	5	5	5	5
	Max capacity persons	8	9	9	13	8	9	9	13	14
	Max Power Authorized (hp)	60	120	152	152	60	120	152	152	200
	Max Power Recommended (hp)	60	80	115	150	60	80	115	150	200
	Engine Shaft Type	L	L	L	L	L	L	L	L	XL
	Total Boat Weight (excl engines) (kg)	390	485	620	740	390	485	620	740	990
	Max Engine weight (kg)	120	200	200	245	120	200	200	245	280
	Max capacity without engine (kg)	720	810	810	1170	720	810	810	1170	1260
	Fuel Tank Capacity (L)	38	70	115	140	38	70	115	140	200
	Fuel Tank Construction Material	Plastic	Stainless Steel	Stainless Steel	Stainless Steel	Plastic	Stainless Steel	Stainless Steel	Stainless Steel	Stainless Steel
CONSOLE	Deluxe Console with mechanical steering system monocable, front seat and fuel tank integrated	■	■			■	■			
	Deluxe Console with hydraulic steering system (Bay Star) front seat and fuel tank integrated			■	■			■	■	
	Deluxe Console with hydraulic steering system (Sea Star) and fuel tank integrated									■
	Hydraulic steering system Bay Star for less than 150 hp		□				□			
	Smartcraft SC 1000 Glass Gauge kits (for SmartCraft Engines)				□				□	□
SEATING	Bench locker with stern seat and backrest	■				■				
	Bench locker with stern seat and backrest convertible in sundeck		■	■	■		■	■	■	■
	Stainless steel leaning post with cushions for 2 persons				■				■	
	Stainless steel leaning post with cushion for 2 persons (adjustable)									■
	Bow sundeck cushion	□	□	□	□	■	■	■	■	■
	Bow extension sundeck with cushion	□	□	□	□	□	□	□	□	□
	Stern fibreglass table kit with support and sundeck cushion									□
Console front seat									□	
TECHNICAL	Automatic bilge pump	■	■	■	■	■	■	■	■	■
	Bow cleat	■	■	■	■	■	■	■	■	
	Fibreglass Bow Roller			□	□		□	□	□	■
	Bathing ladder	■	■			■	■			

VALIANT COMFORT AND CLASSIC LIST OF STANDARD AND OPTIONAL EQUIPEMENT		COMFORT				CLASSIC				
		500	550	580	630	500	550	580	630	685
SAFETY	Bathing platform with ladder in Fibreglass (Left/right)			■*	■*			■*	■*	■
	Lifting eyes (bow & stern) (Not installed on 500 and 550 models)	■	■	■	■	■	■	■	■	■
	Stainless steel handrail	■	■	■	■	■	■	■	■	■
	Windscreen	■	■	■	■	■	■	■	■	■
	Repair kit	■	■	■	■	■	■	■	■	■
	Manual foot pump	■	■	■	■	■	■	■	■	■
	Set of 2 paddles	■	■	■	■	■	■	■	■	■
	Kit navigation lights for console with 360° light	□	□	□	□	□	□	□	□	□
	Fixed Right side backrest with cushions									□
	Electric windlass with anchor									□
COMFORT	Bimini in painted aluminum	□	□	□	□	□	□	□	□	
	Bimini for Roll Bar	□	□	□	□	□	□	□	□	□
	Stainless Steel Roll Bar with navigation lights	□	□	□	□	□	□	□	□	□
	Console cover	□	□	□	□	□	□	□	□	□
	Mooring cover	□	□	□	□	□	□	□	□	□
	Deck shower with 39 l water tank capacity (4 l/min pump 12 volt)	□	□			□	□			
	Deck shower with 45 l water tank capacity (10 l/min pump 12 volt)			□	□			□	□	□
	Real teak			□	□			□	□	□
	Stainless steel ski mast		□	□	□		□	□	□	□
	Bow table kit with support			□	□			□	□	
Refrigerator 40Lt with cover									□	
SAFETY	Black Compass F-50	□	□	□	□	□	□	□	□	
	Black Compass F-83									□
	VHF model Standard Horizon GX 1100 + Antenna Banten Fastif + bracket	□	□	□	□	□	□	□	□	□
	Radio model FUSION MS RA200 + Dock iPod RA200 + Speaker 4" + Antenna am-fm	□	□	□	□	□	□	□	□	□

■ Standard □ Options * only left

Get more out of Valiant

Find detailed boat specifications and features at www.valiant-boats.com - the ultimate source for Valiant boats.

Remember - Life vests float. You don't. Always use your engine's safety stop lanyard.

www.valiant-boats.com



VALIANT

© 2013 Brunswick Marine *in* EMEA. All Rights Reserved. GB - Printed in Belgium. Part #: 90-8M0086025

Brunswick Marine *in* EMEA continuously explores means to improve the products it designs, manufactures and distributes. Every effort is made to produce sales and service literature which is current. Changes to specifications of engines, boats and accessories are ongoing. This brochure should not be regarded as a precise guide to the latest specifications. This brochure is also not an offer for sales of any particular engine, boat or accessory. Distributors and dealers are not agents of Brunswick Marine *in* EMEA or one of its affiliates and they have no authority to bind Brunswick Marine *in* EMEA by any express undertaking or representation, including but not limited to representations of product, sales, applications or service nature. Not all products are available in all countries and some are available only in limited quantities. Some products shown in this catalogue are equipped with optional accessories. Please see your local dealer. Visit: www.brunswick-marine.com



The quality system of
Brunswick Marine *in* EMEA
is ISO 9001:2000 certified

 **BRUNSWICK**
GENUINE INGENUITY